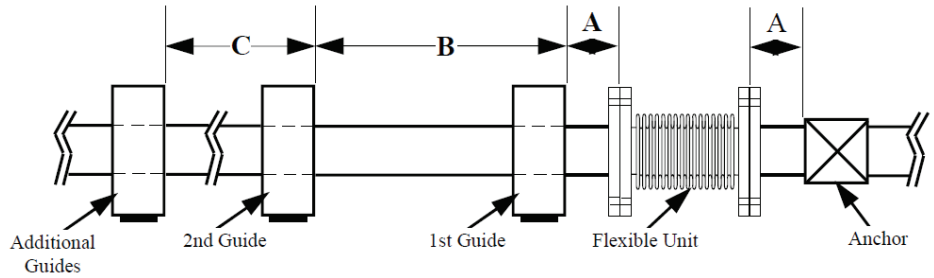
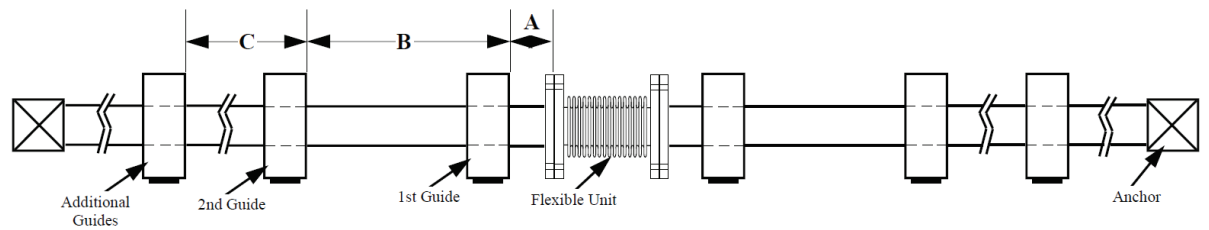


Typical Pipe Guide Spacing



Concentric Pipe Guide Spacing



Pipe Size	A	B	C			
	Max. Distance from Bellows to 1st Guide or Anchor	Approx. Distance Between 1st to 2nd Guide	Approx. Distance Between Additional Pipe Guides (in feet)			
			@ 50 PSI	@ 100 PSI	@ 150 PSI	@ 300 PSI
3/4"	3"	11"	18	13	10	8
1"	4"	1' 4"	21	15	12	10
1 1/4"	5"	1' 5"	23	17	13	12
1 1/2"	6"	1' 9"	28	20	17	13
2"	8"	2' 4"	32	23	18	15
2 1/2"	10"	2' 11"	35	28	22	20
3"	1'	3' 6"	38	28	23	17
3 1/2"	1' 2"	4' 1"	45	35	27	19
4"	1' 4"	4' 8"	52	38	31	22
5"	1' 8"	5' 8"	63	45	38	25
6"	2'	7'	68	48	40	28
8"	2' 8"	9' 4"	87	62	45	38
10"	3' 4"	11' 8"	107	75	60	48
12"	4'	14'	118	85	70	50
14"	4' 8"	16' 4"	122	88	72	55
16"	5' 4"	18' 8"	137	96	80	60
18"	6'	21'	145	105	85	65
20"	6' 8"	23' 4"	160	118	90	70
24"	8'	28'	181	125	105	75

Consult Flextech for information specific to your application.